



### Description & Features:

- Wide variety to measure pressure and temperature of ammonia systems
- $\pm 0.5\%$  to  $\pm 3-2-3\%$  accuracy available
- 2.5" (63mm) to 10" (250mm) dial sizes
- CRN registered
- 5 year warranty

### Applications:

- Used to display pressure and temperature on closed refrigeration systems

Specifications	Accuracy: $\pm 0.5\%$ to $\pm 1\%$	Accuracy: $\pm 1.5\%$	Accuracy: $\pm 3-2-3\%$
<b>Dial</b>	4" (100mm), 6" (150mm), 8.5" (215mm), 10" (250mm): White aluminum with black and red markings	2.5" (63mm), 3.5" (90mm), 4" (100mm): White aluminum	2.5" (63mm), 4" (100mm): White aluminum
<b>Case</b>	4" (100mm), 6" (150mm): AISI 304 SS 8.5" (215mm), 10" (250mm): Aluminum case	2.5" (63mm), 4" (100mm): AISI 304 SS 3.5" (90mm): Steel painted black	2.5" (63mm), 4" (100mm): Steel painted black
<b>Lens</b>	Polycarbonate	Polycarbonate	Polycarbonate
<b>Ring</b>	4" (100mm), 6" (150mm): 304 SS 8.5" (215mm), 10" (250mm): Aluminum	2.5" (63mm): SS 3.5" (90mm): Steel 4" (100mm): AISI 304 SS	2.5" (63mm): Steel, painted black 4" (100mm): Plated steel
<b>Socket</b>	316L SS	316 SS	2.5" (63mm): Steel 4" (100mm): Nickel plated steel
<b>Connection</b>	1/4" NPT	1/4" NPT standard	1/4" NPT standard
<b>Bourdon Tube</b>	316L SS, drawn seamless	316 SS	316 SS
<b>Movement</b>	304 SS	304 SS	304 SS
<b>Pointer</b>	Aluminum, anodized black, micrometer adjustable	Aluminum, anodized black	Aluminum, anodized black
<b>Welding</b>	TIG	TIG	TIG
<b>Over-Pressure Limit</b>	30% of full scale value	30% of full scale value	30% of full scale value
<b>Working Pressure</b>	Maximum 75% of full scale value	Maximum 75% of full scale value	Maximum 75% of full scale value
<b>Ambient/Process Temperature</b>	-40°F to 150°F (-40°C to 65°C): Dry, -4°F to 150°F (-20°C to 65°C): Liquid filled (8.5" dry)	-40°F to 150°F (-40°C to 65°C): Dry -4°F to 150°F (-20°C to 65°C): Liquid filled	-40°F to 150°F (-40°C to 65°C): Dry
<b>Accuracy</b>	4" (100mm), 6" (150mm): $\pm 1\%$ ANSI/ASME Grade 1A 8.5" (215mm), 10" (250mm): $\pm 0.5\%$ ANSI/ASME Grade 2A	$\pm 1.5\%$ of full scale	$\pm 3-2-3\%$ ANSI/ASME Grade B
<b>Enclosure Rating</b>	2.5" (63mm), 4" (100mm), 6" (150mm): IP65 8.5" (215mm), 10" (250mm): IP52	IP65	IP52

## Order Codes (products in bold are normally in stock)

Dial Size	Accuracy: $\pm 0.5\%$		Accuracy: $\pm 1.5\%$		Accuracy: $\pm 3-2-3\%$	
	30-0-150 psi <sup>o</sup> /F	30-0-300 psi <sup>o</sup> /F	30-0-150 psi <sup>o</sup> /F	30-0-300 psi <sup>o</sup> /F	30-0-150 psi <sup>o</sup> /F	30-0-300 psi <sup>o</sup> /F
2.5" (63mm) Bottom	-	-	<b>PAM1750</b>	<b>PAM1751</b>	PAM1699	PAM1700
2.5" (63mm) Back (CB)	-	-	<b>PAM1752</b>	PAM1753	-	-
3.5" (90mm) Bottom	-	-	PAM1717	PAM1818	-	-
4" (100mm) Bottom	<b>PAM1705</b>	<b>PAM1706</b>	<b>PAM1701</b>	<b>PAM1702</b>	<b>PAM1695</b>	<b>PAM1696</b>
4" (100mm) Back (LB)	PAM1708	PAM1709	PAM1703	<b>PAM1704</b>	-	-
4" (100mm) Back (CB)	-	-	-	-	PAM1697	PAM1698
6" (150mm) Bottom	PAM1710	PAM1711	-	-	-	-
8.5" (215mm) Bottom	PAM1712	PAM1713	-	-	-	-
10" (254mm) Bottom	PAM1714	PAM1715	-	-	-	-

### Option suffix for above order codes only:

CB = Centre back connection

Front flange available

Back flange available

LB = Lower back connection

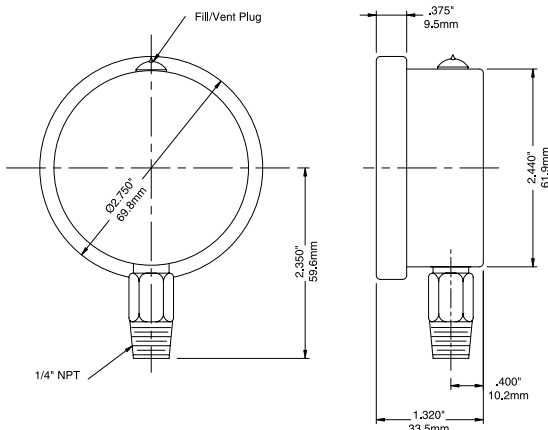
U-Clamp available

Glycerin fill available (except on 8.5" (215mm), 10" (250mm) dials)

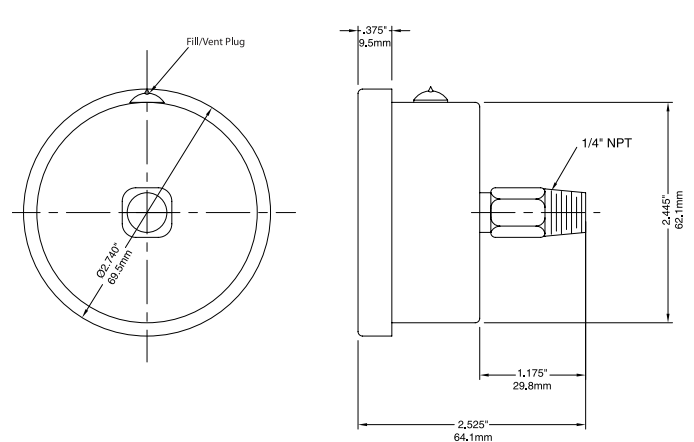
Other connection sizes and ranges available upon request

## PAM with accuracy $\pm 0.5\%$

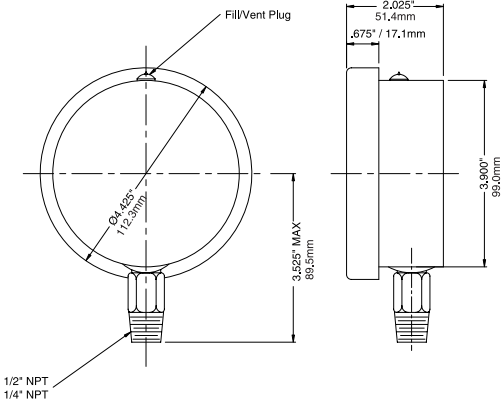
### 2.5" Bottom Connection



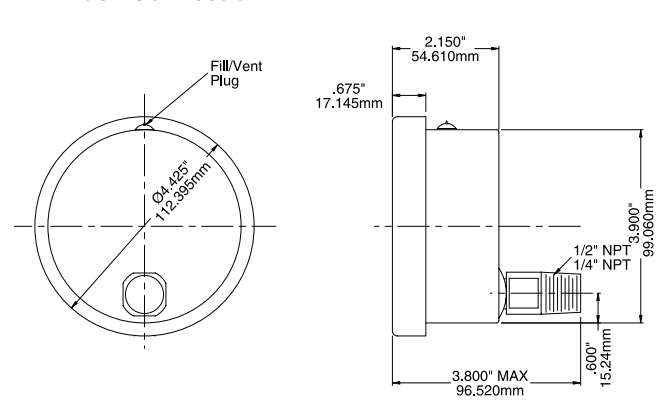
### 2.5" Back Connection



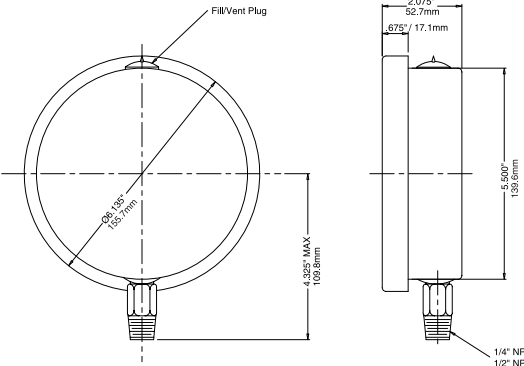
### 4" Bottom Connection



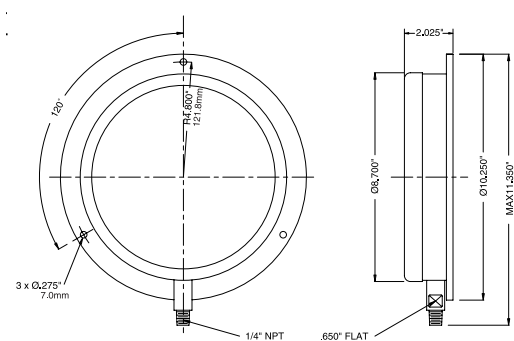
### 4" Back Connection



### 6" Bottom Connection

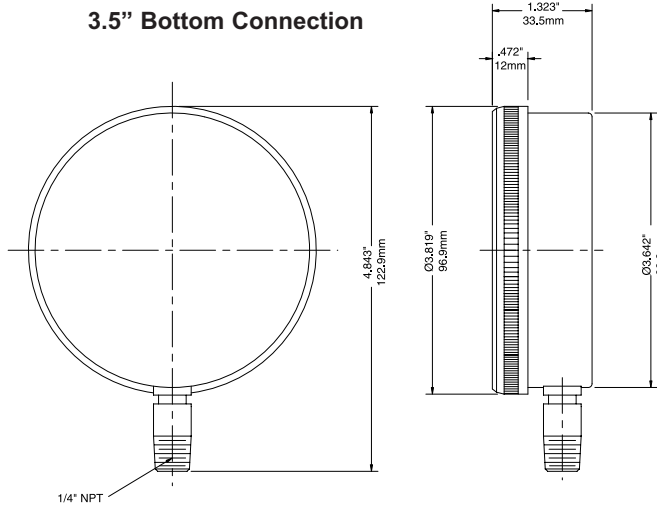


### 8.5" Bottom Connection



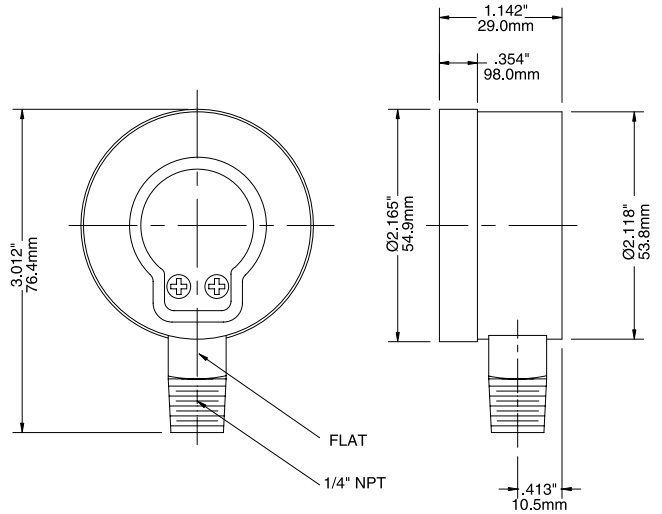
## PAM with accuracy $\pm 1.5\%$

### 3.5" Bottom Connection

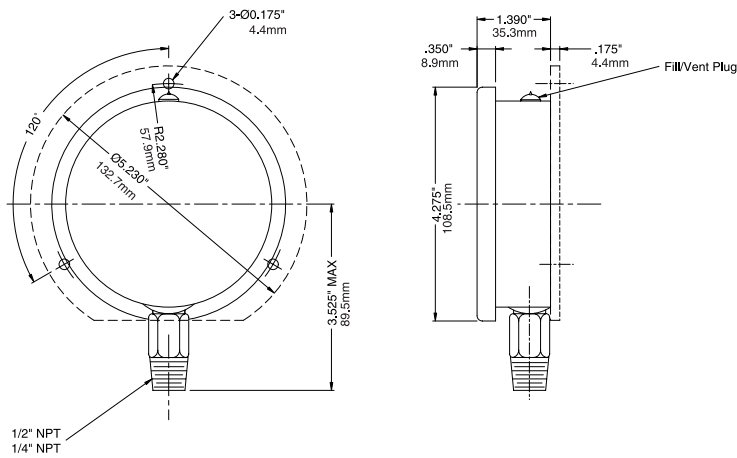


## PAM with accuracy $\pm 3-2-3\%$

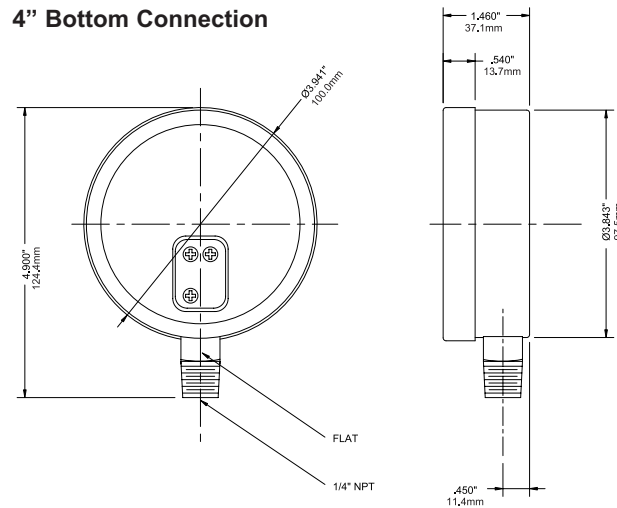
### 2.5" Bottom Connection



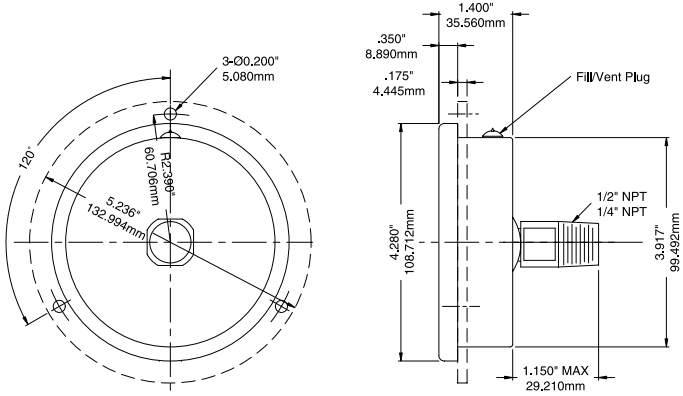
### 4" Bottom Connection



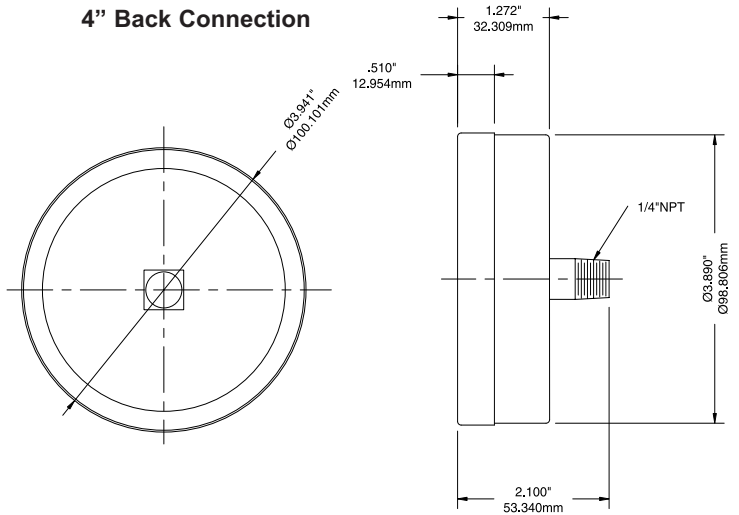
### 4" Bottom Connection



### 4" Back Connection



### 4" Back Connection



## Series Number (for custom, non-standard product)

	P	A	M																
<b>DIAL SIZE</b>																			
2.5" (63mm)				2	5														
3.5" (90mm)				3	5														
4.0" (100mm)				4	0														
6.0" (150mm)				6	0														
8.5" (215mm)				8	5														
10.0" (250mm)				9	0														
<b>CASE MATERIALS</b>																			
304SS						T													
316SS						S													
Aluminum						A													
Steel Painted Black (2.5" & 4" only)						Y													
<b>WETTED PARTS</b>																			
316SS							S												
Monel							M												
Steel (2.5" & 4" 3%-2%-3% only)							C												
Special							Z												
<b>CONFIGURATION</b>																			
Bottom Connection, Stem Mounting								A											
Bottom Connection, Back Flange, Surface Mounting								B											
Bottom Connection, Front Flange, Surface Mounting								C											
Back Connection, Stem Mounting								D											
Back Connection, Back Flange, Surface Mounting								E											
Back Connection, Wide Front Flange, (Drilled) Panel Mounting								F											
Back Connection, Narrow Front Ring, Panel Mounting (Yoke)								V											
Special								Z											
<b>CONNECTION SIZE</b>																			
1/8"								8											
1/4"								4											
3/8"								3											
1/2"								2											
Special								Z											
<b>THREAD</b>																			
NPT									N										
BSP (G)									B										
BSPT (R)									T										
M14 x 1.5									F										
M20 x 1.5									M										
Special									Z										
PRIMARY SCALE																			
<b>UNITS - See Page 13</b>																			
<b>RANGE - See Page 13</b>																			
SECONDARY SCALE																			
<b>UNITS - See Page 13</b>																			
<b>OPTIONS</b>																			
Black Rubber Boot																		S	Z
Blowout Back																		S	X
Blowout Disk																		S	B
Hinged Case																		S	T
Maximum Adjustable Pointer																		S	J
Monel Socket and Tube																		S	W
Over and Understops																		S	U
Oxygen Cleaning																		S	L
Phenolic Case																		S	S
Safety Glass																		S	A
Solid Front Safety Case with Safety Glass																		S	I
Stainless Steel Tag Plate																		S	M
StabilizR™ Movement																		S	3
Test Certificate																		S	O
No Options																		X	X