

NVA Stainless Steel Needle Valve



Description & Features:

- Excellent flow regulation and leak tight
- The one-piece body construction (no welding) provides strength, safety and corrosion resistance
- "Slow opening" prevents sudden pressure surge and instrument damage
- Available in Soft Seat (up to 6,000 psi, Delrin® seat) and Hard Seat (up to 10,000 psi)
- CRN registered
- 1 year warranty

Applications:

- Refineries, liquid petroleum gas and processing plant systems

Order Codes

NPT Connection	Delrin® Soft Seat	SS Hard Seat	Carbon Steel Hard Seat
1/4" Female x 1/4" Female	NVA25SFFS	NVA25SFFH	NVA25CFFH
1/2" Female x 1/2" Female	NVA5SFFS	NVA5SFFH	NVA5CFFH
1/4" Male x 1/4" Female	NVA25SMFS	NVA25SMFH	NVA25CMFH
1/2" Male x 1/2" Female	NVA5SMFS	NVA5SMFH	NVA5CMFH

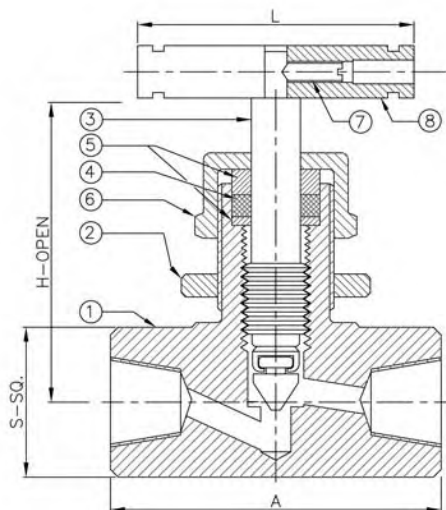
Note: Other configurations available

SS Needle Valves can be supplied to meet MR-01-75 NACE (Sour gas service)

Graphoil packing for high temperature applications available

Panel mounting kits available

Delrin® Soft® Soft Seat		
Description	Material	Drawing Number
Body	AISI 316 SS	1
Panel Nut	AISI 316 SS	2
Stem	AISI 316 SS	3
Packing	Teflon®	4
Washer	AISI 316 SS	5
Gland Nut	AISI 316 SS	6
Grub Screw	Steel Plated	7
Handle	AISI 304 SS	8
Seat Material	Delrin	-



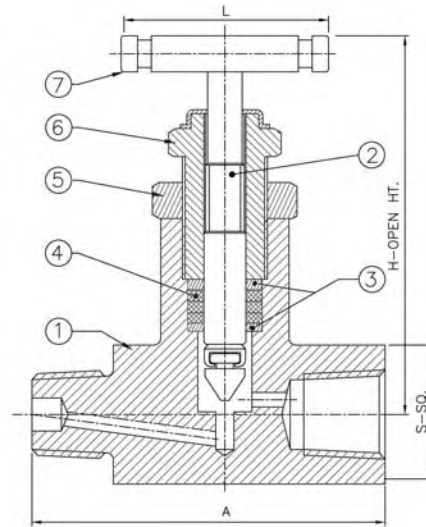
Temperature Range: -65°F to 200°F (-54°C to 93°C)

Size	A	S-SQ	H-Open	L
1/4"	1.95" (50mm)	0.86" (22mm)	2.69" (69mm)	1.95" (50mm)
1/2"	2.65" (68mm)	1.17" (30mm)	3.23" (83mm)	2.34" (60mm)

Teflon® and Delrin® are registered trademarks of Dupont Corporation

Stainless Steel Hard Seat		
Description	Material	Drawing Number
Body	AISI 316 SS	1
Stem	AISI 316 SS - Stellite V Tip	2
Packing Washer	AISI 316 SS	3
Gland Packing	Teflon®	4
Lock Nut	AISI 316 SS	5
Gland Retainer	AISI 316 SS	6
Handle	AISI 304 SS	7
Seat Material	AISI 316 SS	-

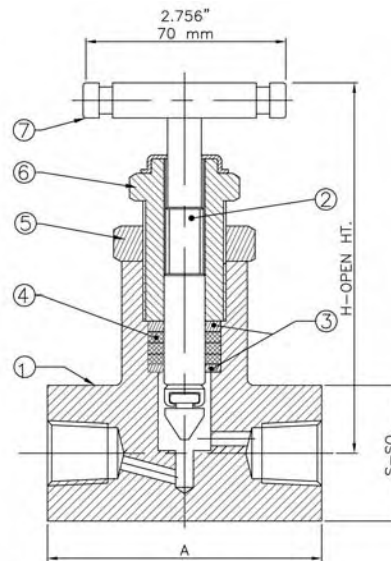
Temperature Range: -65°F to 450°F (-54°C to 232°C)



Size	A	S-SQ	H-Open	L
1/4"	2.36" (60mm)	0.98" (25mm)	3.35" (86mm)	2.36" (60mm)
1/2"	3.23" (82mm)	1.33" (34mm)	3.82" (98mm)	2.73" (70mm)

Carbon Steel Hard Seat		
Description	Material	Drawing Number
Body	Carbon Steel	1
Stem	AISI 316 SS - Stellite V Tip	2
Packing Washer	AISI 316 SS	3
Gland Packing	Teflon®	4
Lock Nut	Carbon Steel	5
Gland Retainer	Carbon Steel	6
Handle	Aluminum black anodized	7
Seat Material	Carbon Steel	-

Temperature Range: -65°F to 450°F (-54°C to 232°C)



Size	A	S-SQ	H-Open	L
1/4"	2.15" (55mm)	0.98" (25mm)	3.35" (86mm)	2.36" (60mm)
1/2"	2.93" (75mm)	1.33" (34mm)	3.82" (98mm)	2.73" (70mm)