

HONEYWELL CONTROLS
www.honeywell.com

INDEX

ACTUATORS..... 7-8
AUXILIARY SWITCHES 7-3
DAMPER MOTORS/ACTUATORS..... 7-2
DEHUMIDISTATS..... 7-7
ELECTRONIC AIR CLEANERS — FURNACE MOUNT 7-10
FAN/LIMIT AQUASTATS..... 7-2
FILTRATION SYSTEM — REVERSE OSMOSIS..... 7-2
GAS VALVES 7-7
HUMIDIFIERS..... 7-11
IGNITION MODULES 7-4
MEDIA AIR CLEANERS — DUCT MOUNT..... 7-11
MISCELLANEOUS 7-9 – 7-10
PILOT BURNERS..... 7-3
RELAYS/CONTACTORS..... 7-3
SENSORS..... 7-4
SEQUENCERS 7-8
THERMOCOUPLES 7-7
THERMOSTATS..... 7-4 – 7-6
TRANSFORMERS..... 7-2
WIRELESS CONTROL FOR THERMOSTATS 7-7
ZONE CONTROL..... 7-8
ZONE CONTROL DAMPERS 7-9

For Pricing Call your nearest ECCO Supply™ branch.

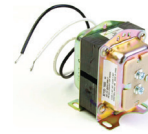
Expert Service. Quality Products. Since 1960.

HONEYWELL CONTROLS

www.honeywell.com

TRANSFORMERS

ITEM #	MODEL	DESCRIPTION
762798	AT20B1056/U	120/24V – 20VA
762808	AT72D1725/U	120V – 40VA
762810	AT72D1733/U	208/240V – Primary
762791	AT140A1018/U	120/208/240V – With Universal Mount Plate
762794	AT175A1008/U	120/208/240V – Universal Mount



AT72D



AT140A

FILTRATION SYSTEM — REVERSE OSMOSIS

ITEM #	MODEL	DESCRIPTION
762732	50045947-001/U	RO Filter System with Storage Tank and Pump – for homes with water pressure lower than 45 psi
762734	50046086-001/U	Filter Replacement Kit – includes #1 Sediment Filter and #2 RO Filter

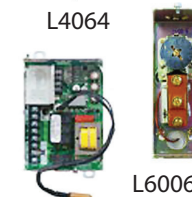


FAN/LIMIT AQUASTATS

ITEM #	MODEL	DESCRIPTION
763178	L4029E1011/U	Limit Control 3" Insertion
763242	L4064B2210/U	Fan/Limit Comb. 11-1/2" Insertion
763240	L4064B2228/U	Fan and Limit Controller, 5" Insertion
763244	L4064B2236/U	Fan and Limit Controller, 8" Insertion
763300	L480G1044/U	Temperature Controller, 20 ft. Copper Element
763308	L6006A1145/U	Aquastat Control – High or Low Horizontal Mount
763310	L6006C1034/U	Aquastat – High or Low Limit with Circulator Control
763344	L7224U1002/U	Aquastat – Universal Electronic Oil with EnviraCOM Communication
762160	121371A/U CARD	Aquastat Well 1/2" NPT



L4064



L6006C

L7224U



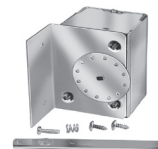
121371A

DAMPER MOTORS/ACTUATORS

ITEM #	MODEL	DESCRIPTION
763482	M4185E4006/U	Modutrol IV™ Motor, 60 lb-in, Spring Return, Two Position, Line Voltage, 1 Aux. Switch, 24/120/230V
763390	M436A1116/U	Damper Actuator with Mounting Hardware
763470	M836A1042/U	Damper Motor – Spring Return, Two Position, 1 Aux. Switch, 24V
763488	M847A1031/U	Draft Damper Operator
763490	M847A1049/U	Draft Damper Operator
763498	M847D1012/U	Damper Actuator for ARD and ZD Zone Dampers
763530	M9184D4009/U	Damper Motor – Non-Spring Return
763532	M9185D4008/U	Damper Motor – Spring Return
763548	M9185E4005/U	Modutrol IV™ Motor, 60 lb-in, Spring Return Actuator, Proportioning Control, 1 Aux. Switch, 24V
764207	ML6984A4000/U	Valve Actuator – Non-Spring Return



M836



M847



M4185/M9185

– E.&O.E. – All Prices F.O.B. Our Warehouse – Subject to Change Without Notice – All Taxes Extra – May not be Available at All Branches –

HONEYWELL CONTROLS

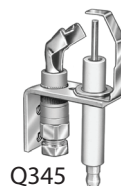
www.honeywell.com

PILOT BURNERS

ITEM #	MODEL	DESCRIPTION
764328	Q314A4586/U	"B" Bracket .018 Orifice, Extra .010 Orifice, Straight Tip
764329	Q314A6094/U	"B" Bracket .018 Orifice, L Tip
764330	Q314A6102/U	"B" Bracket .018 Orifice, K Tip
764360	Q345A1305/U	"B" Bracket .018 Orifice, F Tip
764362	Q345A1313/U	"B" Bracket .018 Orifice, L Tip
764364	Q345A1321/U	"B" Bracket .018 Orifice, K Tip
764338	Q3450C1185/U	Smart Valve system pilot burner for natural gas, includes BCR-18 Orifice and left facing tip
762650	390686-1/U	Propane Orifice
762656	390686-4	Natural Gas Orifice



Q314



Q345

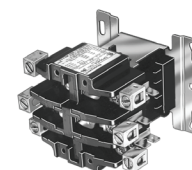


Q3450C

390686-1/U

RELAYS/CONTACTORS

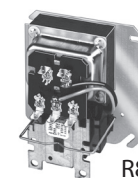
ITEM #	MODEL	DESCRIPTION
762984	DP2030A5005/U	PowerPro Contactor, 2-Pole, 30A, 24V Coil
762994	DP3040A5003/U	PowerPro Contactor, 3-Pole, 40A, 24V Coil
762986	DP2040A1003/U	Economy Contactor, 2-Pole, 40A, 24V Coil
762998	DP3040C5001/U	Economy Contactor, 3-Pole, 40A, 208/240V Coil
764614	R4222B1082/U	SPDT 120V, Double QC Term Coil
764618	R4222D1013/U	DPDT 120V, 12 Amp General Purpose Switching Relay with Line Volt a/c Coil
764626	R4222N1002/U	DPDT 120V, Single QC Term Coil
764738	R8182H1070/U	Triple Aquastat Protector Relay
764740	R8184G4033/U	Protectorelay® Oil Burner Control with 30 second safety timing and manual safety switch
764762	R8222B1067/U	SPDT General Purpose Switching Relay, Double QC Coil
764766	R8222D1014/U	DPDT 12 Amp Switching Relay
764794	R8239B1043/U	Fan Center Relay, DPDT with 2 N.O. and N.C. Power Contacts, 120V
764792	R8239D1007/U	Fan Center Relay, 120V
764850	R8285A1048/U	Control Center SPDT, 120V
764856	R841C1169/U	Electric Heat Relay, 208/240V
764857	R841D1036/U	Electric Heat Relay, SPST, 24V, 50/60 Hz
764852	R8845U1003/U	DPST 120V, 60 Hz Switching Relay
764888	RA116A1063/U	Stack Mounted Protectorelay®
764892	RA832A1082/U	DPST 120V, 60 Hz Controller



DP Series



R8222



R8285

AUXILIARY SWITCHES

ITEM #	MODEL	DESCRIPTION
763000	DP3AUX-1NC/U	1 Normally Closed Snap-on Side Mount Auxiliary Interlock
763001	DP3AUX-1NO/U	1 Normally Open Snap-on Side Mount Auxiliary Interlock
763002	DP3AUX-1NO-1NC/U	1 Normally Open/Normally Closed Snap-on Side Mount Auxiliary Interlock



- E.&O.E. - All Prices F.O.B. Our Warehouse - Subject to Change Without Notice - All Taxes Extra - May not be Available at All Branches -

HONEYWELL CONTROLS

www.honeywell.com

SENSORS

ITEM #	MODEL	DESCRIPTION
762946	C7027A1031/U	Mini Peeper, Flame Sensor, Ultraviolet
766574	C7089R1013/U	Wireless Outdoor Temperature and Humidity Sensor
762974	C7089U1006/U	Outdoor Temperature Sensor for TH8000 Series Thermostats
762976	C7189R1004/U	RedLINK™ enabled indoor temperature and humidity sensor
762978	C7189U1005/U	Indoor Temperature Sensor for TH8000 Series Thermostats
762980	C8600A1000/U	Carbon Monoxide Alarm
764372	Q3400A1024/U	HSI Pilot Ignitor/Sensor



C7027A



C7089R1013



C7189R1004



Q3400

IGNITION MODULES

ITEM #	MODEL	DESCRIPTION
764336	Q3200U1004/U	Hot Surface Ignitor, Universal, Glowfly™
764369	Q347A1004/U	Single Rod Ignitor for use with S87C, E, K in conjunction with Q354 Sensor only
764732	R7284B1024/U	Ignition Module, Interrupt Electric Oil Primary with Status Indicator Light
764730	R7284U1004/U	Ignition Module, Interrupt Universal Digital Electric Oil Primary
765029	S8610U3009/U	Universal Intermittent Pilot Ignition Module
765075	S8910U1000/U	HSI Module, 24V, 120V HS Element
765080	S9200U1000/U	Universal Integrated Furnace Control for Single Stage, Hot Surface Ignition Applications
765172	SV9501M2528/U	Hot Surface Pilot Ignitor 1/2" x 1/2", In/Out, 3.5", WC Std. Opening, Natural Gas
766566	Y8610U6006/U	Y-Pack Containing S8610U3009 Intermittent Pilot Control and VR8304M Gas Valve With 1/2" x 3/4" Inlet/Outlet, Flange Kit and LP Conversion Kit



Q347



S8610



SV9501

THERMOSTATS

ITEM #	MODEL	DESCRIPTION
765180	T410A1021/U	Electric Heat Baseboard, White
765226	T498A1927/U	Electric Heat Baseboard Thermostat, White
765228	T498A1778/U	Electric Heat Thermostat
765274	T6051A1057/U	Line Voltage – Heavy Duty
765334	T651A3026/U	Line Voltage, Light Duty, Heat/Cool
765346	T675A2068/U	Insertion Stat –15°C to +35°C, 5' Copper
765478	T678A1155/U	Insertion Stat –15°C to +35°C
765496	T812A1002/U	Snap Action, Single State, Heat Only, 24VAC, Premier White
765506	T822K1018/U	Vertical Mount, Heat Only, Adjustable Heat Anticipation
765507	T822K1034/U	Vertical, 10° - 30°C – White
765509	T827K1017/U	Vertical Mount, Heat Only, MV and DC, Mercury Free
765566	T8775A1017/U	Digital Round, Heat Only
765612	T921A1522/U	10°C - 30°C, Horizontal or Vertical Mount, Proportioning
765634	T991A1061/U	Temperature Control 160°–260°F



T410



T822



T921



T991

(cont'd on next page)

– E.&O.E. – All Prices F.O.B. Our Warehouse – Subject to Change Without Notice – All Taxes Extra – May not be Available at All Branches –

HONEYWELL CONTROLS

www.honeywell.com

THERMOSTATS (cont'd)

ITEM #	MODEL	DESCRIPTION
765644	T991A1244/U	Temperature Control 55° – 175°F
765652	T991A1426/U	Temperature Control with Bulb Holder
765660	TB8220U1003/U	VisionPRO™ 2H/2C Conventional or 3H/2C Heat Pump
765674	TH1100DH1004/U	PRO1000 Non-Programmable, 1H, 24VAC or Battery, Backlit Display
765656	TH1100DV1000/U	Pro 1000 Vertical, Non-Programmable Digital, Backlit Display, Dual Powered (24VAC and/or Battery), Heat Only
765657	TH1110DV1009/U	Pro 1000 Vertical, Non-Programmable Digital, Backlit Display, Dual Powered (24VAC and/or Battery), 1H/1C
765858	TH2110DV1008/U	Pro 2000 Vertical, Programmable Digital, Backlit Display, Dual Powered (24VAC and/or Battery), 1H/1C
765675	TH2210DH1000/U	Pro 2000 Horizontal, Programmable Digital, Backlit Display, Dual Powered (24VAC and/or Battery), 2H/1C Heat Pump
765670	TH3110D1008/U	PRO 3000 Non-Programmable, 1H/1C
765672	TH4110D1007/U	Pro 4000, 5-2 Programmable, 1H/1C Backlit Display
765668	TH5110D1022/U	FocusPRO, 1H/2C Non-Programmable, Digital, Large Display
765669	TH5110D1006/U	FocusPRO 5000, 1H/1C Non-Programmable, Digital, Small Display
765676	TH5220D1003/U	FocusPRO 5000, 2H/2C Non-Programmable, Digital, Standard Display
765678	TH5220D1029/U	FocusPRO 5000, 2H/2C Non-Programmable, Digital, Large Display
765671	TH5320R1002/U	FocusPRO® wireless, Non-Programmable, Backlit Display, Battery Powered
765680	TH6110D1005/U	FocusPRO 6000, 1H/1C, 5-1-1 Programmable, Standard Display
765684	TH6110D1021/U	FocusPRO 6000, 1H/1C, 5-1-1 Programmable, Large Display
765686	TH6220D1002/U	FocusPRO 6000, 2H/2C, 5-1-1 Programmable, Standard Display
765691	TH6220D1028/U	FocusPRO 6000, 2H/2C, 5-1-4 Programmable, Large Display
766580	TH6320R1004/U	FocusPRO Wireless 5-1-1 Programmable
766579	TH6320U1000/U	FocusPRO 6000, 5-1-1 Programmable Digital, Backlit Display, Dual Powered (24VAC and/or Battery), up to 3H/2C, 5.09 sq. in. Display
765694	TH6320WF1005/U	WiFi FocusPRO 6000, 7-Day Programmable/Non-Programmable, Common Wire Required, up to 3H/2C Heat Pump, up to 2 Heat/ 2 Cool Conventional
765692	TH8110R1008/U	VisionPRO 8000 with RedLINK™ Technology, Residential or Commercial, 7-Day Programmable, 1H/1C Heat Pump or 1H/1C Conventional, works stand-alone or with the THM5421R1021 Equipment Interface Module (Up to 4 H/2C Heat Pump or Up to 3 Heat / 2 Cool Conventional)
765662	TH8110U1003/U	VisionPRO™, 1H/1C, Touchscreen Programmable

(cont'd on next page)



T991



TH1100DH1004/U



TH1100DV



TH2210DH1000/U



TH2110DV1008/U



TH5220D1029/U



TH5320R1002/U










TH6320WF1005/U



TH8110R1008/U

– E.&O.E. – All Prices F.O.B. Our Warehouse – Subject to Change Without Notice – All Taxes Extra – May not be Available at All Branches –

THERMOSTATS (cont'd)

ITEM #	MODEL	DESCRIPTION	
765673	TH8320R1003/U	VisionPRO 8000 with RedLINK™ Technology, Residential or Commercial, 7-Day Programmable, up to 3H/2C Heat Pump or 2H/2C Conventional, works stand-alone or with the THM5421R1021 Equipment Interface Module	 TH8320R1003/U
765693	TH8320WF1029/U	WiFi VisionPRO 8000 7-Day Touchscreen Programmable/ Non-Programmable, Common Wire Required, up to 3H/2C Heat Pump or up to 2H/2C Conventional	 TH8320WF1029/U
766593	TH8321R1001/U	VisionPRO 8000 with RedLINK™ Technology, Residential or Commercial use, 7-Day Programmable, up to 3H/2C Heat Pump or up to 2H/2C Conventional, includes a set of Universal IAQ Contacts to control Humidification, Dehumidification or Ventilation, works stand-alone or with the THM5421R1021 Equipment Interface Module	 TH8321R1001/U
765698	TH8732WF5034/U	Lyric Wi-Fi Thermostat, up to 3 heat/2 cool heat pumps, up to 2 heat/2 cool conventional systems	 TH8321U1097/U
765702	TH9320WF5003/U	WiFi 9000 7-Day Programmable/Non-Programmable, Colour Touchscreen, up to 3H/2C Heat Pump or up to 2H/2C Conventional	 TH9320WF5003/U
765517	TL8100A1008/U	7-Day Programmable Line Volt Thermostat with Backlit Display. For gas, oil, electric systems, hot water heating, hot air systems and Millivolt systems	 YTH5320R1000/U
765695	TS812A1007/U	Snap Action, Single State, Heat Only, 750 Millivolt, Positive OFF, Premier White	 YTH6320R1023/U
766599	YTH5320R1000/U	Wireless FocusPRO® System Kit, RedLINK™ enabled. Everything you need to relocate thermostat, upgrade equipment or add zones without running new wires. Up to 3H/2C Heat Pump or up to 2H/2C conventional. Wireless FocusPRO® Kit – Y-Pack containing a wireless FocusPRO® Non-Programmable Thermostat, Equipment Interface Module and Return Air Sensor.	 YTHX9421R5101WW/U
766600	YTH6320R1001/U	Wireless Thermostat Kit, RedLINK™ Enabled, up to 3H/2C Heat Pump or up to 2H/2C Conventional. Kit includes Wireless FocusPRO 5-1-1 Programmable Thermostat, Equipment Interface Module and Return Air Sensor	 YTHX9421R5085SG/U
766604	YTH6320R1023/U	Wireless Zoning Adapter Kit, RedLINK™ Enabled, up to 3H/2C Heat Pump or 2H/2C Conventional. Kit includes Wireless FocusPRO 5-1-1 Programmable Thermostat and Wireless Adapter	 YTHX9421R5085BB/U
766598	YTHM5421R1010/U	Prestige® 2-Wire IAQ Equipment Interface Module Kit with 2 Duct Sensors	 50002883-001
766623	YTHX9421R5101WW/U	Prestige® 2-Wire IAQ Kit, high definition colour touchscreen, white front/white sides, RedLINK™ technology	
766594	YTHX9421R5085WW/U	Prestige® 2-Wire IAQ Kit with high definition colour touchscreen, white front/white sides, RedLINK™ technology	
766595	YTHX9421R5085WG/U	Prestige® 2-Wire IAQ Kit with high definition colour touchscreen, white front/grey sides, RedLINK™ technology	
766596	YTHX9421R5085SG/U	Prestige® 2-Wire IAQ Kit with high definition colour touchscreen, silver front/black sides, RedLINK™ technology	
766597	YTHX9421R5085BB/U	Prestige® 2-Wire IAQ Kit with high definition colour touchscreen, black front/black sides, RedLINK™ technology	
762730	50002883-001/U	Cover Plate Assembly for TH3000, TH4000, TH5000, TH6000 Series Stats. Contains Medium and Large Cover Plate, Bracket and Mounting Hardware	

– E.&O.E. – All Prices F.O.B. Our Warehouse – Subject to Change Without Notice – All Taxes Extra – May not be Available at All Branches –

HONEYWELL CONTROLS

www.honeywell.com

DEHUMIDISTATS

ITEM #	MODEL	DESCRIPTION
763146	H46C1166/U	Wall mount. 24/120/240 VAC. 20% - 80% RH. Premier White



WIRELESS CONTROL FOR THERMOSTATS

ITEM #	MODEL	DESCRIPTION
766576	REM5000R1001/U	Portable Comfort Control in Non-Zoned Systems, Sense and Control Temperature from any room in the home. In Zoned Systems, view and adjust all RedLINK™ Enabled Thermostats.
766578	REM1000R1003/U	RedLINK™ Enabled Entry/Exit remote. Remotely sets thermostats to preset temperatures, used with Prestige 2.0 thermostats.



REM5000R1001/U



REM1000R1003/U

GAS VALVES

ITEM #	MODEL	DESCRIPTION
762548	272629A/U	Adapter Kit for Mounting ML6984/ML7984 to V5045 and VGF Non-Pressure Balanced 2-Way Valves
764315	Q313A1402/U	Power Pile Generator 750mV Thermopile, 35" long
765170	SV9502H2522/U	Smart Valve – Controls Gas Flow and Electronic Sequencing in One Unit, 1/2" × 1/2" IN/OUT, 3.2"W.C., 24VAC, 50/60 Hz
765173	SV9520H8513/U	Smart Valve – Controls Gas Flow and Electronic Sequencing in One Unit, 1/2" × 1/2" IN/OUT, 3.5"W.C., 24VAC, 50/60 Hz
765175	SV9641M4510/U	Intermittent Hot Surface Ignition Pilot with Combustion Air Control and Limit Monitoring, Standard Opening 3/4 × 3/4 NPT
765940	V48A2151/U	3/4" Diaphragm Gas Valve
766160	V800A1161/U	1/2" × 1/2" Combination
766162	V800A1179/U	3/4" × 3/4" Combination
766210	V8043G1034/U	Motorized Valve – 2 Pos. Normally Closed – Flare Fitting
766304	V88A1634/U	1-1/2" Diaphragm Gas Valve
766306	V88A1659/U	3/4" Diaphragm Gas Valve
766364	VR8200A2322/U	1/2" × 1/2" Standing Pilot, 24V
766372	VR8200H1236/U	1/2" × 1/2" Standing Pilot, 24V
766378	VR8245M2530/U	1/2" × 1/2" Universal Combination
766384	VR8345M4302/U	3/4" × 3/4" Universal Combination
766420	VS820A1054/U	3/4" × 3/4" Combination Power Pile
766426	VS820A1187/U	1/2" × 1/2" Combination Power Pile



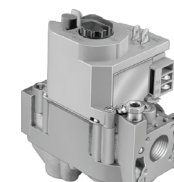
Q313A



SV9641M4510/U



V48 / V88



VR8200

THERMOCOUPLES

ITEM #	MODEL	DESCRIPTION
764340	Q340A1405/U	18", 30mV output, with push-clip connect
764342	Q340A1413/U	24", 30mV output, with push-clip connect
764344	Q340A1421/U	30", 30mV output, with push-clip connect
764346	Q340A1439/U	36", 30mV output, with push-clip connect
764348	Q340A1447/U	48", 30mV output, with push-clip connect



– E.&O.E. – All Prices F.O.B. Our Warehouse – Subject to Change Without Notice – All Taxes Extra – May not be Available at All Branches –

HONEYWELL CONTROLS

www.honeywell.com

ACTUATORS

ITEM #	MODEL	DESCRIPTION
765854	V4055A1007/U	Fluid Power ON-OFF Actuator for use with V5055A,B Valve Bodies. One Second Closing Time, 26 Second Opening Time
766350	VC8711ZZ11/U	Control Central Heating and/or Cooling Systems, Fan Coil Systems, Radiators and Convector. VC Actuator 24/50-60 2WC and SW Coated
766356	VCZMR6100/U	3-Way 1" Sweat Valve Body, 7.4CV, Linearized Cartridge for use with Floating Actuators
766358	VCZND6100/U	3-Way 1-1/4" Female NPT Valve Body, 8.3CV, Linearized Cartridge for use with Floating Actuators



SEQUENCERS

ITEM #	MODEL	DESCRIPTION
764844	R8330D1039/U	Electric Heat Sequencer, Controls 3 Heating Elements and Fan Plus Auxiliary Switch



ZONE CONTROL

ITEM #	MODEL	DESCRIPTION
762702	40003918-002/U	Adapter Kit Bag Assembly for Zone 2-Way Zone Valves
766670	C7735A1000/U	Discharge Air Temperature Sensor
763190	HZ311/U	TrueZONE Control Panel, controls 3 zones of Single Stage Heat and Cool Conventional HVAC equipment. Replaces the EMM-3.
763191	HZ311K/U	TrueZONE Kit – Includes HZ311 Zone Panel, Discharge Air Temperature Sensor, and Transformer.
763206	HZ322/U	TrueZONE, controls 3 zones of up to two stages heat and two stages cool, conventional or heat pump equipment
763208	HZ322K/U	TrueZONE Kit – Includes 1-HZ322, 1-AT1401042 transformer and 1-C7735A1000 Discharge Temperature Sensor
763204	HZ432/U	TrueZONE, controls 4 Zones of up to Three Stages Heat and Two Stages Cool, Heat Pump or Conventional Equipment. Also, Two Stages Fossil and Two Stages Heat Pump Dual Fuel.
763202	HZ432K/U	TrueZONE, controls 4 Zones of up to Three Stages Heat and Two Stages Cool, Heat Pump or Conventional Equipment. Also, Two Stages Fossil and Two Stages Heat Pump Dual Fuel. Includes Discharge Air Temperature Sensor and Transformer
765736	TAZ-4/U	4 Zone Add-a-Zone Panel adds 4 Zones to Total Zone TZ-4 Panel



– E.&O.E. – All Prices F.O.B. Our Warehouse – Subject to Change Without Notice – All Taxes Extra – May not be Available at All Branches –

HONEYWELL CONTROLS

www.honeywell.com

ZONE CONTROL DAMPERS

ITEM #	MODEL	DESCRIPTION
766656	ARD6/U	6" Round Automatic Damper, Spring Open, Power Close
766657	ARD7/U	7" Round Automatic Damper, Spring Open, Power Close
766658	ARD8/U	8" Round Automatic Damper, Spring Open, Power Close
766659	ARD10/U	10" Round Automatic Damper, Spring Open, Power Close
766660	ARD12/U	12" Round Automatic Damper, Spring Open, Power Close
766661	ARD14/U	14" Round Automatic Damper, Spring Open, Power Close
762820	CPRD8/U	TrueZone Bypass Damper – up to 600 CFM
762821	CPRD10/U	TrueZone Bypass Damper – up to 1000 CFM
762822	CPRD12/U	TrueZone Bypass Damper – up to 1400 CFM
762823	CPRD14/U	TrueZone Bypass Damper – over 1400 CFM
763222	MARD6/U	Modulating Automatic Round Damper – 6"
763224	MARD8/U	Modulating Automatic Round Damper – 8"
763226	MARD10/U	Modulating Automatic Round Damper – 10"
763228	MARD12/U	Modulating Automatic Round Damper – 12"
766650	RRD6/U	Retrofit Round Damper 6" 24V
766630	SPRD10/U	10" Regulating Damper
766634	SPRD14/U	14" Regulating Damper
766582	ZD10X8/U	10" x 8" 24V Parallel Blade



ARD



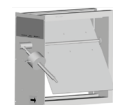
CPRD



MARD



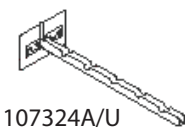
RRD6



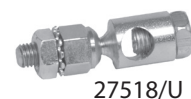
SPRD

MISCELLANEOUS

ITEM #	MODEL	DESCRIPTION
762078	107324A/U	Capillary Tube Holder
762282	136434AA/U	20" Ionizer Wire/ea.
762284	136434BA/U	16" Ionizer Wire/ea.
762386	203371/U	12.5" x 16" Prefilter/ea.
762387	203372/U	12.5" x 20" Prefilter/ea.
762388	203373/U	10" x 20" Prefilter/ea.
762496	26026G/U	Damper Crank Arm
762562	272748AB/U	Replacement Motor – 24V, 50/60 Hz
762570	27518/U	5/16" Ball Joint Swivel
762590	32001639-002/U	Solenoid Valve Assembly
762666	392451-1/U	Energy Cut Off Connector for 1/4" Quick Connects
762680	393691/U	Natural Gas to L.P. Conversion Kit
762697	40003916-012/U	Replacement Head Assembly
762750	7616BR/U	Motor Crank Arm
762786	AM100-US-1/U	1/2" Sweat Union Tailpiece
762788	AM101-US-1/U	3/4" Sweat Union Tailpiece
762867	C554A1463/U	Cadmium-Sulfide Flame Detector
762914	C7008A1174/U	12" Flame Rod Assembly
763150	HVC0001/U	Digital Programmable Bath Fan Control
763152	HVC20A1000/U	Wireless Vent and Filter Boost Remote



107324A/U



27518/U



40003916



7616BR/U



C554

(cont'd on next page)

– E.&O.E. – All Prices F.O.B. Our Warehouse – Subject to Change Without Notice – All Taxes Extra – May not be Available at All Branches –

HONEYWELL CONTROLS

www.honeywell.com

MISCELLANEOUS (cont'd)

ITEM #	MODEL	DESCRIPTION
764991	S483B1002/U	Winter Watchman
765154	ST9103A1002/U	Electronic Fan Timer Integrated Oil Furnace Control – integrated control of burner and circulating fan operations in coil furnace. 30 Sec Heat Fan On Delay, 60/(90)/120/150 Sec Heat Fan Off Delay, Constant Fan, EAC/HUM Terminals
765682	TG511A1000/U	Universal Thermostat Guard – Medium, Clear
766584	THM4000R1000/U	Wireless Adapter, RedLINK™ Enabled, used to make TrueZONE Panels and TrueSTEAM™ Humidifiers RedLINK™ Enabled
766586	THM5320R1000/U	Equipment Interface Module – RedLINK™ enabled, controls up to 3H/2C Heat Pump Systems or up to 2H/2C Conventional Systems when used with wireless FocusPRO® Thermostat. RedLINK™ Equipment Interface Module for use with Wireless FocusPRO® (Also available in kits)
766587	THM5421R1021/U	Equipment Interface Module – controls up to 4 Stages of Heat and 2 Stages of Cool in a Conventional system. Three Dehumidification, and Ventilation. Four Sensor inputs for Prestige IAQ Thermostats and the VisionPRO 8000 with RedLINK™ Thermostats
766583	THM6000R1002/U	RedLINK™ Enabled Internet Gateway, used with Prestige 2.0 Thermostats
766588	THP9045A1023/U	Save-A-Wire Module, used with THX9000 Series Thermostats to Convert a 5-Wire to work on a 4-Wire Connection
765930	UV100A1059/U	Ultraviolet Air Treatment System, Coil Plus



S483



ST9103



THM4000R



THM5320R



THM6000R1002



UV100A1059

ELECTRONIC AIR CLEANERS — FURNACE MOUNT

ITEM #	MODEL	DESCRIPTION
763106	FH8000F1625/U	16" x 25" – TrueCLEAN™
763104	FH8000F2025/U	20" x 25" – TrueCLEAN™
763099	F300E1001/U	16" x 20" – Elite
763100	F300E1019/U	16" x 25" – Elite
763102	F300E1027/U	20" x 20" – Elite
763101	F300E1035/U	20" x 25" – Elite
762720	50000293-002/U	Post Filter for 16" x 25" F300 Electronic Air Cleaners. Two required.
762722	50000293-004/U	Post Filter for 20" x 25" F300E Electronic Air Cleaners. Two required.



F300

HONEYWELL CONTROLS

www.honeywell.com

MEDIA AIR CLEANERS — DUCT MOUNT

ITEM #	MODEL	DESCRIPTION
763022	F100F2002/U	16" x 25" Air Cleaner
763032	F100F2010/U	20" x 25" Air Cleaner
763036	F100F2036/U	20" x 20" Air Cleaner
763092	FC100A1029/U	16" x 25"/F100F Replacement Media
763090	FC100A1011/U	20" x 20"/F100F Replacement Media
763094	FC100A1037/U	20" x 25"/F100F Replacement Media
763096	FR8000F2025/U	TrueCLEAN™ 20 x 25 Replacement Filter for FH8000F2025 Furnace Filter
763097	FR8000F1625/U	TrueCLEAN™ 16 x 25 Replacement Filter for FH8000F1625 Furnace Filter
764220	POPUP1625/U	16" x 25" Replacement Media
764222	POPUP2020/U	20" x 20" Replacement Media
764224	POPUP2025/U	20" x 25" Replacement Media



FC100A



FR8000F



POPUP

HUMIDIFIERS

ITEM #	MODEL	DESCRIPTION
763139	HE100C1001/U	TrueEASE small basic bypass humidifier with installation hardware
763140	HE150C1014/U	Bypass Evaporative Humidifier, Advanced, 12 GPD
763142	HE250C1014/U	Bypass Evaporative Humidifier, Advanced, 17 GPD
763143	HE300A1005/U	Bypass Evaporative Humidifier, Advanced, fan powered, 18 GPD
763138	HE225A1014/U	Bypass Flow-Through Humidifier, 12 Gallons (46 Litres), with Full Installation Kit
763130	HC22E1003/U	Replacement Pad for HE202, HE225
763128	HC22A1007/U	Replacement Pad for HE220
763159	HM506A2000/U	TrueSTEAM™ 6 gallon Humidifier with HumidiPRO Digital Humidity Control
763163	HM509A2000/U	TrueSTEAM™ Humidifier, up to 9 Gallons per day, with manual H8908 Humidistat
763170	50024917-001/U	TrueSTEAM™ Remote Installation Kit with 10' Steam Tube
763172	50024917-002/U	TrueSTEAM™ Remote Installation Kit with 20' Steam Tube
763171	50027997-001/U	Solenoid Valve for TrueSTEAM™. Includes Solenoid Valve, Quick Connect, Restrictor and Wiring Harness
763173	50027998-002/U	Water Level Sensor Assembly for TrueSTEAM™
763175	50028044-001/U	In-Line scale and sediment water filter for residential humidifiers. Maximum water temperature 110°F



HE225



HC22A1007/U



HM506A2000/U



HM512



50028044-001

- E.&O.E. - All Prices F.O.B. Our Warehouse - Subject to Change Without Notice - All Taxes Extra - May not be Available at All Branches -