

How to Order?

Standard solenoid valve

Series No.	Ways	Positions	Valve body size	Controls	Original status	Port size	ID Code	Voltage	Connection mode	Cover color	Valve color	Thread type
V	3:3 ways	2:2 positions	1: 1Series 2: 2Series 3: 3Series 4: 4Series	1: Single control 2: Double control	Blank: NC H: NO	M5: M5 06: 1/8"	Blank: standard type A: Amisco coil	E1: AC110V E2: AC220V E3: AC380V E4: DC24V E5: DC12V	E6: AC36V E7: AC24V E8: DC110V E9: DC48V E10: DC36V	Blank: Brown translucent J: Colorless and translucent	Blank: Black W: White	Blank: G P: PT T: NPT

Order Example:

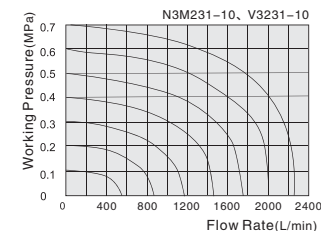
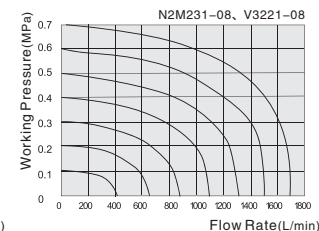
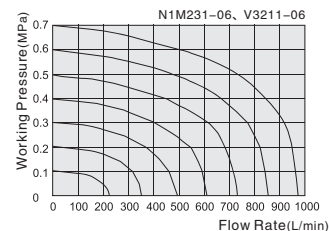
V series solenoid valve, 1 series valve body size, standard pilot+Low power coil, 3/2 way, single control, NC, 1/8" port size, standard coil, DC24V, DIN connector, G thread, ERP code is: V3211-06E4

Specifications

Model NO.	V3211-M5 V3212-M5	V3211-06 V3212-06	V3221-06 V3222-06	V3221-08 V3222-08	V3231-08 V3232-08	V3231-10 V3232-10	V3241-10 V3242-10	V3241-15 V3242-15
Port size	M5	G1/8	G1/8	G1/4	G1/4	G3/8	G3/8	G1/2
Sectional area(mm ²)	5.5(CV=0.31)	12(CV=0.67)	14(CV=0.78)	16(CV=0.89)	25(CV=1.40)	30(CV=1.68)	50(CV=2.79)	50(CV=2.79)
Working medium	Clean air(After 40 μm filtration)							
Acting type	Pilot type							
Lubrication	Not required							
Working pressure(MPa)	0.15-0.8							
Guaranteed pressure(MPa)	1.2							
Working temperature(°C)	-5-60							
Voltage range	-15%-10%							
Power consumption	DC:2.8W ; AC:3.0VA				DC:4.8W ; AC:5VA			
Insulation class	Class F							
Protective class	IP65(DIN40050)							
Max. acting frequency	5 Cycles/s							
Activate time(S)	<0.05							
Weight(g)	V3211: 102 V3212: 169	V3221: 107 V3222: 303	V3231: 260 V3232: 370	V3241: 443 V3242: 569				

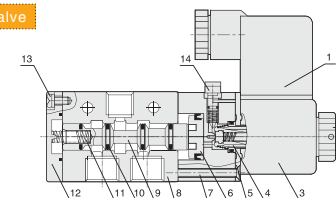
Note: The technical data of NO type and NC type are same.

Flow Chart

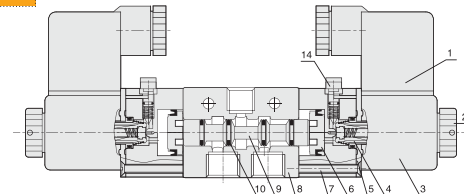


Internal structure

Single solenoid valve



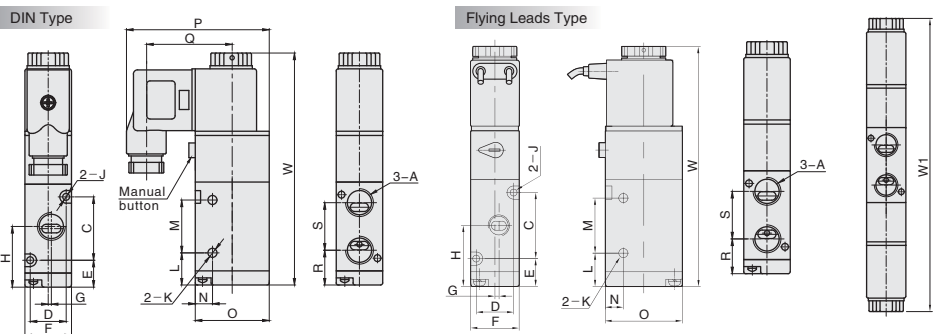
Double solenoid valve



NO.	Part name	Material
1	Connector	Engineering plastic
2	Nut	POM+Carbon steel
3	Coil	Cu
4	Pilot units	
5	Plate	Carbon steel
6	Piston	POM
7	Screw	Carbon steel
8	Valve body	Aluminum alloy
9	Spool	Aluminum alloy
10	O-ring	HNBR
11	Spring	Stainless steel
12	Rear cover	Zinc alloy
13	Screw	Carbon steel
14	Manual override	Engineering plastic

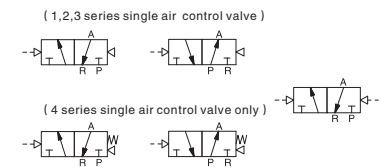
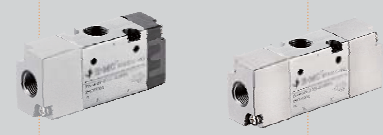
○ Main Dimension

Single solenoid valve



Model/Sign	A	C	D	E	F	G	H	J	K	L	M	N	O	P	Q	R	S	W	W1*
V3211-M5	M5	19	13	13.2	18	0	22.7	3.3	3.3	12.2	21	7.5	27	54.8	32.8	15.7	14	87.5	129.6
V3211-06	G1/8	19	13	13.2	18	1.5	23.7	3.3	3.3	12.2	21	7.5	27	54.8	32.8	14.7	16	87.5	129.6
V3221-06	G1/8	30	17	12.7	22	0	27.7	3.3	4.3	15.2	25	8.2	35	67.5	40.5	18.5	18.5	109.7	164
V3221-08	G1/4	30	17	12.7	22	1.5	28.7	3.3	4.3	15.2	25	8.2	35	67.5	40.5	16.5	22.5	109.7	164
V3231-08	G1/4	35	20	15	27	0	32.5	4.3	4.3	17.5	30	10.5	40	70	40.5	21.5	22	120.5	176
V3231-10	G3/8	35	20	15	27	2	32.5	4.3	4.3	17.5	30	10.5	40	70	40.5	20.5	24	120.5	176
V3241-10	G3/8	40.5	27	24.8	34	0	45	4.3	5.3	21	48	13.5	50	75	40.5	29.5	31.5	144	198
V3241-15	G1/2	40.5	27	24.8	34	2	45	4.3	5.3	21	48	13.5	50	75	40.5	29.5	31.5	144	198

Note: The dimensions of NO type and NC type are same, the dimensions of N series and V series are same.



○ How to Order?

Series No.	Ways	Positions	Valve body ID code	Controls	Initial Status	Port size	Reset Type	Thread type
RVA	3: 3 ways	2:2 positions	1: 1Series 2: 2Series 3: 3Series 4: 4Series	1: Single control 2: Double control	Blank: normal close(N.C) H:normal open(N.O)	M5: M5 06: 1/8" 08: 1/4" 10: 3/8" 15: 1/2"	Blank: spring return (Apply to 4 series single control valve) Q: air return (Apply to 1,2,3 series single control valve)	Blank: G P: PT T: NPT

Order Example:
RVA series air control valve, 3/2 way, 2 series valve body size, single control, NC type, 1/4" port size, air reset, PT thread
ERP code is: RVA3221-08Q-P

○ Specifications

Model No.	RVA3211-M5 RVA3212-M5	RVA3211-06 RVA3212-06	RVA3221-06 RVA3222-06	RVA3221-08 RVA3222-08	RVA3231-08 RVA3232-08	RVA3231-10 RVA3232-10	RVA3241-10 RVA3242-10	RVA3241-15 RVA3242-15
Port size	M5	G1/8	G1/8	G1/4	G1/4	G3/8	G3/8	G1/2
Sectional area(mm)	5.5(CV=0.31)	12(CV=0.67)	14(CV=0.78)	16(CV=0.89)	25(CV=1.40)	30(CV=1.68)	50(CV=2.79)	50(CV=2.79)
Working medium	Clean air(After 40 μm filtration)							
Acting type	External type							
Reset type	Spring reset / Gas reset							
Lubrication	Not required							
Working pressure(MPa)	0.15~0.8							
Guaranteed Pressure(MPa)	1.2							
Working temperature(C)	-20~70 (Dry air)							
Max. acting frequency	5 Cycles/s							
Weight(g)	RVA3211:60 RVA3212:75	RVA3221:116 RVA3222:143	RVA3231:187 RVA3232:220	RVA3241:378 RVA3242:430				